

FEATURES

- 2-way normally closed
- Offers operating pressure up to 150 psig and a range of orifice sizes
- Satisfies a 0.2 sccm leakage specification of He for 100 million life cycles and offers high repeatability
- Provides computer-automated calibrations and full calibration traceability
- Uses either DC current or pulse width modulation with closed loop feedback to deliver optimal system performance
- Maintains ideal flow through thermal compensation
- Oxygen and analytically clean

**MEDIA COMPATIBILITY**

Air, argon, helium, hydrogen, methane, nitrogen, oxygen & others

ELECTRICAL

Power max. 2 W
Voltage max. 5.5, 8, 11.5, 13.5, 20 or 29 V_{DC}

PHYSICAL PROPERTIES

Operating environment	0 to 55 °C
Storage temperature	-40 to 70 °C
Length	45.3 mm (1.785 in)
Width	16.5 mm (0.625 in)
Height	17 mm (0.67 in)
Porting	Barbs or 10-32 UNF female; manifold mount with screens
Weight	63 g (2.2 oz)
Internal volume	0.508 cm ³ (0.031 in ³)
Filtration (recommended)	
VSONC1..., VSONC2...	17 µm
all others	40 µm
Lubrication	None required

VSO is a registered trademark of Parker Hannifin Corporation.

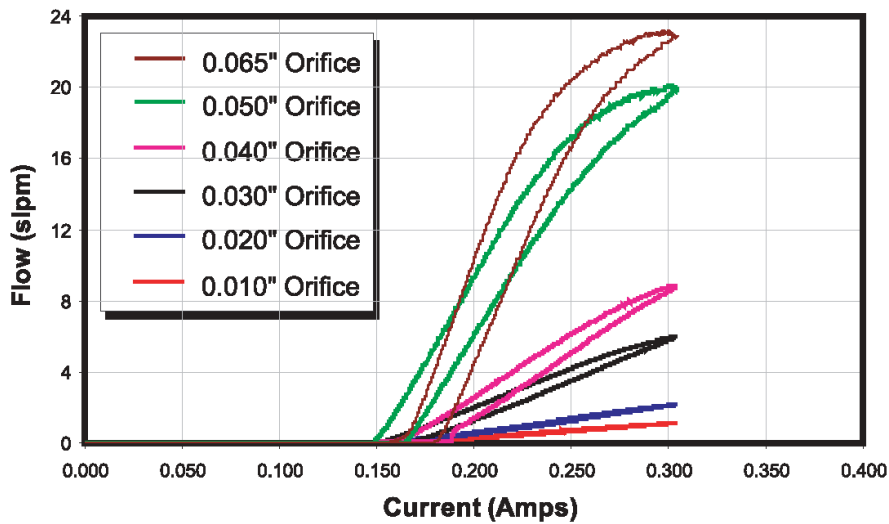
Normally closed proportional solenoid valve

PERFORMANCE CHARACTERISTICS

Part no.	Pressure	Vacuum	Orifice sizes	Leak rate ¹	Response
VSONC1...	0..150 psid	0...27 "Hg (0...13 psi)	0.010" (0.245 mm)	≤0.2 sccm of helium (bubble tight)	<30 msec cycling (2 W)
VSONC2...	0...150 psid		0.020" (0.510 mm)		
VSONC3...	0...150 psid		0.030" (0.762 mm)		
VSONC4...	0...75 psid		0.040" (1.016 mm)		
VSONC5...	0...100 psid		0.050" (1.270 mm)		
VSONC6...	0...50 psid		0.065" (1.651 mm)		

FLOW CURVE²

VSO Typical Air Flow
25 psid



Notes:

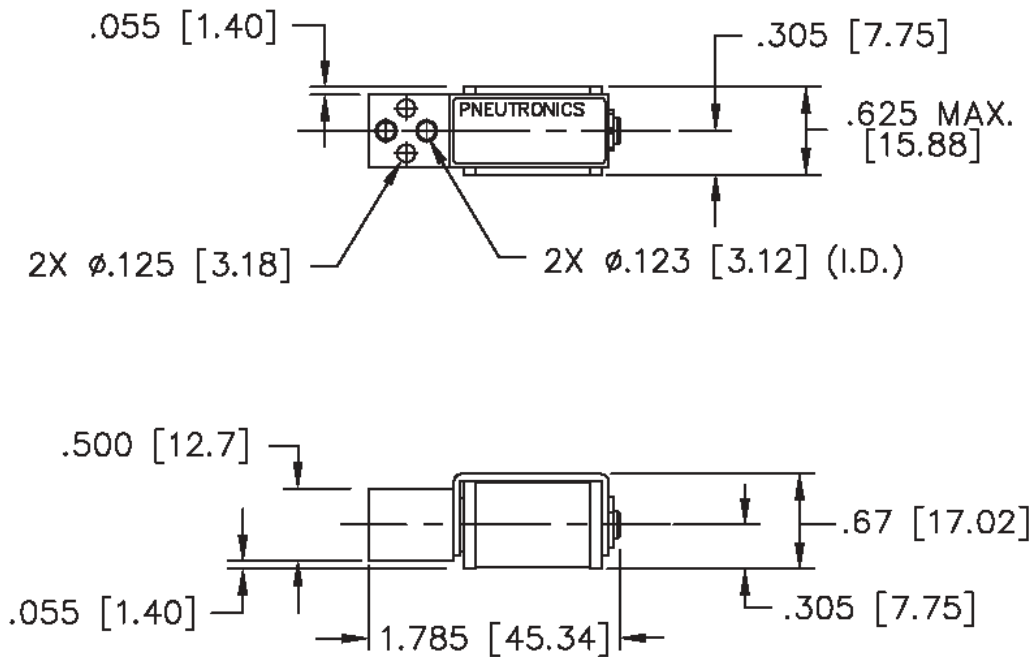
¹ sccm denotes Standard Cubic Centimeters per Minute. It is a unit for the flow rate at standard conditions of temperature and pressure. 1000 sccm = 1 slpm.

² slpm denotes Standard Liters per Minute. It is a unit for the flow rate at standard conditions of temperature and pressure. 1 slpm = 1000 sccm.

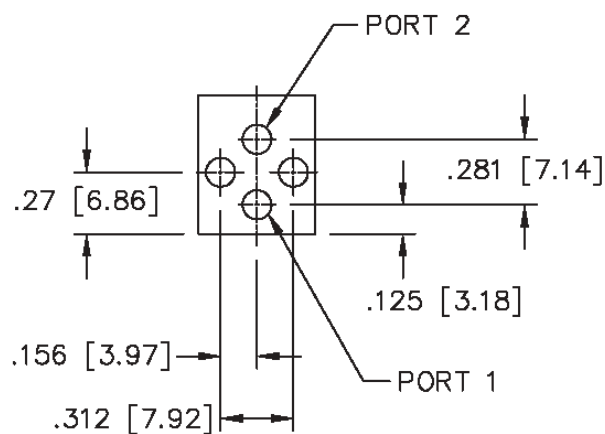
Normally closed proportional solenoid valve

OUTLINE DRAWING

Basic valve dimensions



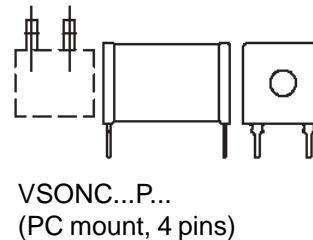
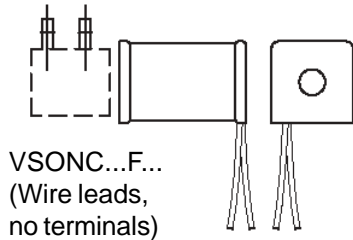
Port and mounting hole diagrams



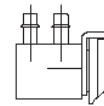
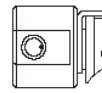
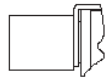
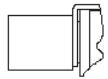
dimensions in inches (mm)

Normally closed proportional solenoid valve

ELECTRICAL INTERFACE OPTIONS



PNEUMATIC INTERFACE OPTIONS



ORDERING INFORMATION

Standard	Model no.		Series	Body series		Elastomer	Coil selection			Electrical interface	Pneumatic interface*		
	Options	VSONC		Max. pressure	Orifice		11: Series 11	25: Series 25*	Max. voltage*			Resis- tance**	Current***
		1:	150 psid	0.010" (0.245 mm)	S	11: Series 11	V: FKM/brass	A: 5.5 V _{DC}	11 Ω	0.304 A	F: wire leads, 18" P: PC board mount, 4 PC pins	0: manifold mount	
		2:	150 psid	0.020" (0.510 mm)			25: Series 25*	C: FFKM*/brass	B: 8 V _{DC}	23 Ω		0.212 A	1: manifold mount with screens**
		3:	150 psid	0.030" (0.762 mm)				I: FKM/stainless steel	C: 11.5 V _{DC}	47 Ω		0.152 A	5: 10-32 UNF threaded female (Series 25)
		4:	75 psid	0.040" (1.016 mm)				H: FFKM*/stainless steel	D: 13.5 V _{DC}	68 Ω		0.125 A	
		5:	100 psid	0.050" (1.270 mm)					E: 20 V _{DC}	136 Ω		0.091 A	
		6:	50 psid	0.065" (1.651 mm)				F: 29 V _{DC}	274 Ω	0.066 A		8: 1/8" barbs	
								* available in nickel-plated brass only	* this option will affect price; contact Sensortech for details			* max. voltage for continuous full flow, ambient temp. 55°C	
								** coil resistance for room temp.			*** input current for full flow		** this option will affect price
Example: VSONC 1 S 11 V A F 8													

Note: Not all combinations might be available. Please contact your nearest Sensortech sales representative for further information.

Sensortech reserves the right to make changes to any products herein. Sensortech does not assume any liability arising out of the application or use of any product or circuit described herein, neither does it convey any license under its patent rights nor the rights of others.