

Monolithic crystal filter

MQF70.0-1500/07



Application

- 4 pol filter
- i.f.- filter
- use in mobile and stationary transceivers

Limiting values

		Unit	Value
Center frequency	f_0	MHz	70.0
Insertion loss		dB	≤ 2.0
Pass band at 3.0 dB		kHz	± 7.50
Ripple in pass band	$f_0 \pm 6.00$ kHz	dB	≤ 1.0
Stop band attenuation	$f_0 \pm 30$ kHz	dB	≥ 40
	$f_0 \pm 100$ kHz	dB	> 70
Alternate attenuation		dB	> 70
Spurious response		dB	> 40

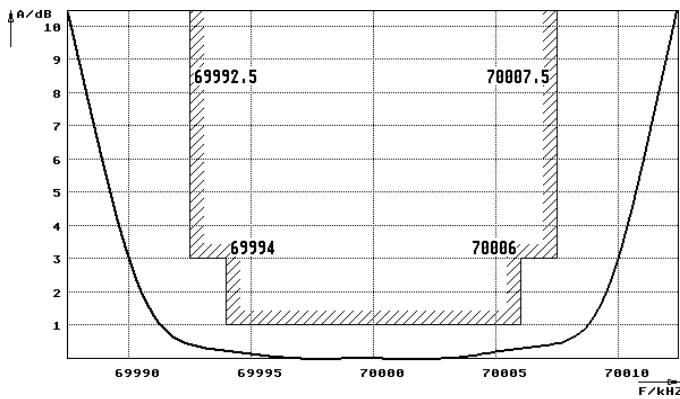
Terminating impedance Z

R1 C1	Ohm/pF	3000 -0.50	
R2 C2	Ohm/pF	3000 -0.50	
Coupling capacitance	Ck	pF	-0.5

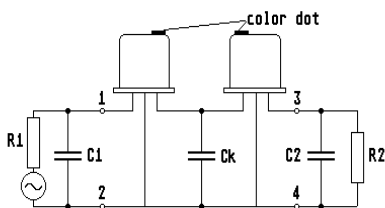
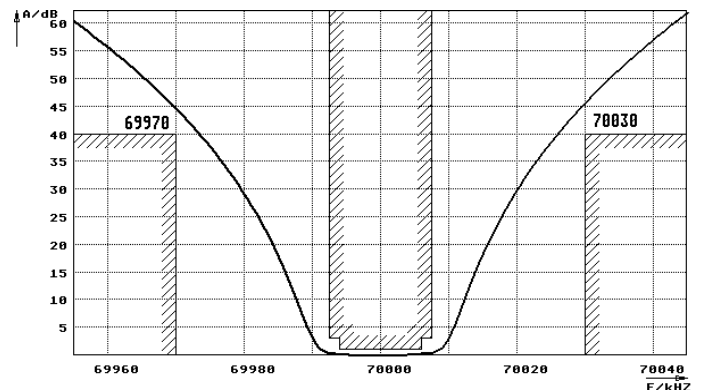
Operating temp. range	$^{\circ}\text{C}$	-20... +70
-----------------------	--------------------	------------

Characteristics MQF70.0-1500/07

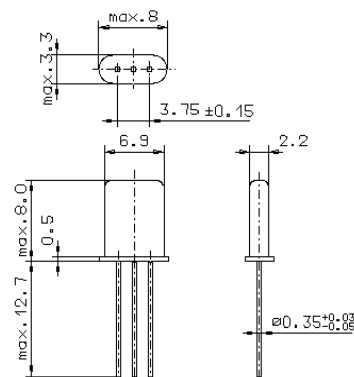
Pass band



Stop band



Pin connections: 1 Input
2 Input-E
3 Output
4 Output-E



GH9