

# Monolithic crystal filter

## MQF40.025-0800/02



### Application

- 6 pol filter
- i.f.- filter
- use in mobile and stationary transceivers

### Limiting values

		Unit	Value
Center frequency	$f_0$	MHz	40.025
Insertion loss		dB	$\leq 3.0$
Pass band at 1.0 dB		kHz	$\pm 4.00$
Ripple in pass band	$f_0 \pm 4.00$ kHz	dB	$\leq 1.0$
Stop band attenuation	$f_0 \pm 25$ kHz	dB	$\geq 60$
	$f_0 \pm 40$ kHz	dB	$> 80$
Alternate attenuation	$f_0 - 40 \dots -60$ kHz	dB	$> 80$
	$f_0 + 25 \text{kHz} \dots 250 \text{MHz}$	dB	$> 60$

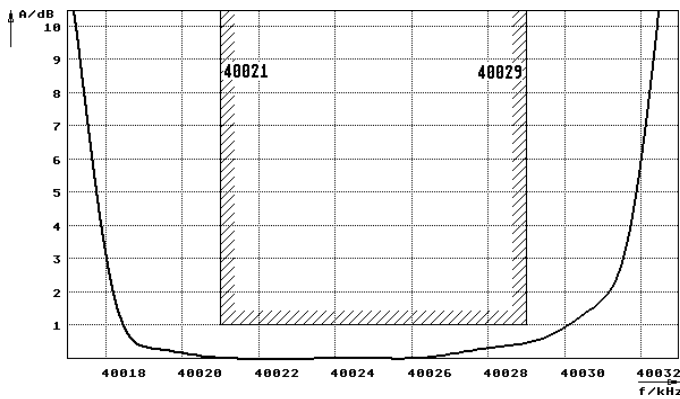
### Terminating impedance Z

R1    C1	Ohm/pF	50    0
R2    C2	Ohm/pF	50    0

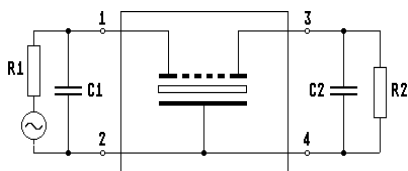
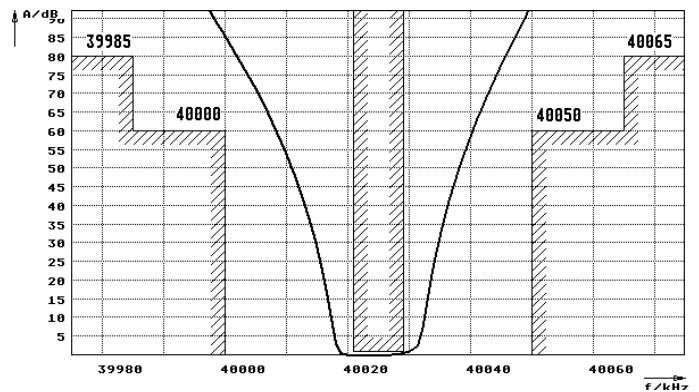
Operating temp. range ° C -25... +70

### Characteristics MQF40.025-0800/02

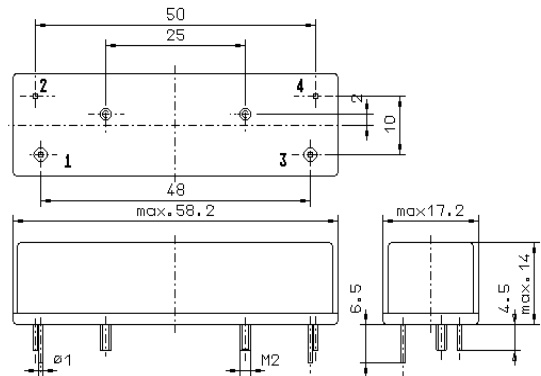
#### Pass band



#### Stop band



Pin connections: 1 Input  
2 Input-E  
3 Output  
4 Output-E



GM7