



ELECTRONICS, INC.
 44 FARRAND STREET
 BLOOMFIELD, NJ 07003
 (973) 748-5089
<http://www.nteinc.com>



NTE30107 LED – Dual Color 5mm Super Fresh Red/Super Blue

Features:

- RoHS Compliant
- Water Clear

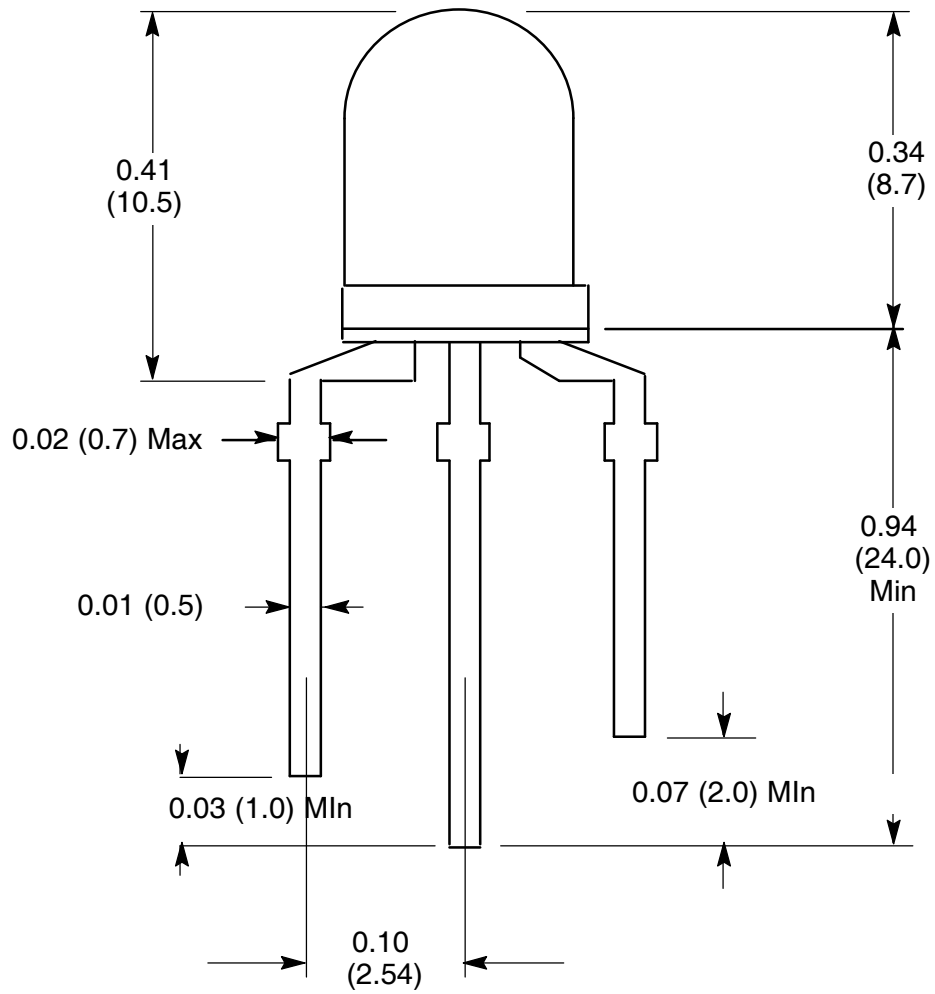
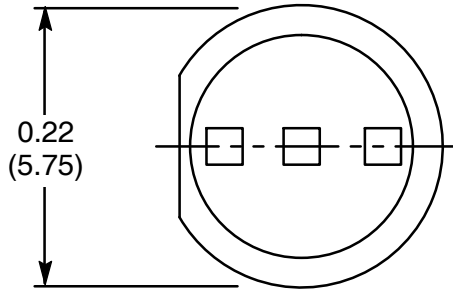
Absolute Maximum Ratings: ($T_A = +25^\circ\text{C}$ unless otherwise specified)

Power Dissipation, P_d		
Super Fresh Red	100mW
Super Blue	120mW
Continuous Forward Current, I_F	25mA
Peak Forward Current (1/10 Duty Ratio, 0.1ms Pulse Width), I_{FM}	50mA
Reverse Voltage, V_R		
Super Fresh Red	5V
Super Blue	4V
Electrostatic Discharge (Super Blue Only), HBM	150V
LED Junction Temperature, T_j	+100°C
Operating Temperature Range, T_{opr}	-25°C to +85°C
Storage Temperature Range, T_{stg}	-40°C to +100°C
DIP Soldering Temperature (During Soldering, 3mm from body, 5sec max), T_L	+260°C

Electro-Optical Characteristics: ($T_A = +25^\circ\text{C}$ unless otherwise specified)

Parameter	Symbol	Test Conditions	Min	Typ	Max	Unit
View Angle of Half Power	$2\theta_{1/2}$	$I_F = 20\text{mA}$	-	30	-	deg
Forward Voltage	VF	$I_F = 20\text{mA}$	-	2.00	2.50	V
Super Fresh Red				3.50	4.20	V
Reverse Current	IR	$V_R = 4\text{V}$	-	-	10	μA
Super Fresh Red				-	60	μA
Luminous Intensity (Note 1)	IV	$I_F = 20\text{mA}$	700	1500	-	mcd
Super Fresh Red				500	1400	-
Peak Emission Wavelength	λ_p	$I_F = 20\text{mA}$	-	635	-	nm
Super Fresh Red				-	468	-
Dominant Wave Length (Note 2)	$\lambda_d(\text{HUE})$	$I_F = 20\text{mA}$	-	626	-	nm
Super Fresh Red				-	470	-
Super Blue						

Note 1. Luminous intensity is measured with an Exeltron 2001, Tolerance = 30%.
 Note 2. The dominant wavelength, λ_d , is derived from the CIE Chromaticity Diagram and represents the color of the device.



- 1. Red +
- 2. Common Lead -
- 3. Blue +