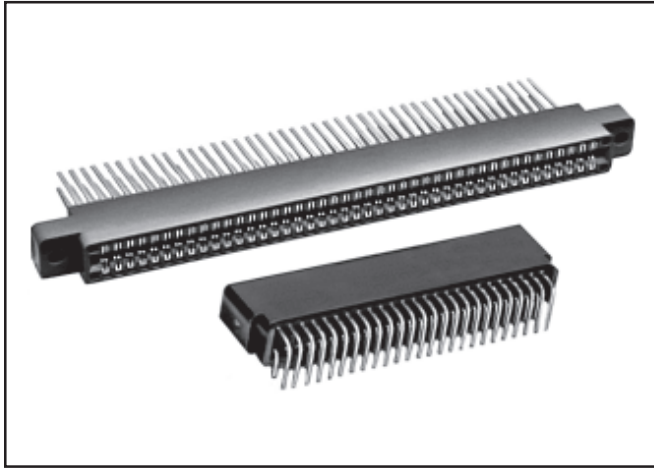


## Edgeboard Connectors

*Dual Readout, .100" [2.54mm] C-C, Standard and Right Angle Terminals*



### ELECTRICAL SPECIFICATIONS

**Current Rating:** 3 amps.

**Test Voltage Between Contacts:**

At sea level: 650 V RMS.

At 70,000 feet [21,336 meters]: 275 V RMS.

**Insulation Resistance:** 5000 Megohm minimum at 500 VDC potential.

**Contact Resistance:** 30 millivolts maximum at rated current (with gold plating).

**Operating Temperature:** - 65°C to + 125°C.

**Humidity:** 96 hours at 90% relative humidity at + 40°C, dried at room temperature for 3 hours minimum, insulation resistance was greater than 5000 Megohm.

**Durability:** After 500 cycles of insertion and withdrawal of a .070" [1.78mm] thick steel test board, contact resistance less than .030 V at 3 amps on gold plated contacts and individual contact pair separation force when measured with a .054" [1.37mm] thick steel test blade was greater than 1/2 ounce.

**Shock:** Three 50g shocks in each of 3 mutually perpendicular planes with no loss of continuity.

**Vibration:** 2 hours in each of 3 mutually perpendicular planes, frequency sweep 10 to 55 cps at .06 double amplitude with no loss of continuity.

### MATERIAL SPECIFICATIONS

**Body Material:**

"1" glass-filled diallyl phthalate per MIL-M-14, Type SDG-F green, flame retardant (UL 94V-0).

"2" glass-filled phenolic per MIL-M-14, Type MFH dark green, flame retardant (UL 94V-0).

"3" thermoplastic polyester, glass-filled, black, flame retardant (UL 94V-0).

"5" thermoplastic polyphenylene sulfid, glass filled, brown, flame retardant (UL 94V-0).

**Contacts:** Phosphor bronze. (See How to Order.)

**Polarizing Key:** Glass reinforced nylon, flame retardant (UL 94H-B).

**Plating:** Gold. (See How to Order.)

### FEATURES

- Grid Patterns: .100" C-C x .150" [2.54mm x 3.81mm] and .100" C-C x .200" [2.54mm x 5.08mm].
- Standard and right angle terminals.
- Greater design latitude:
  - 4 body materials: Diallyl phthalate, phenolic, glass-filled polyester and glass-filled polyphenylene sulfid.
  - 7 contact termination styles - 3 Standard, 4 Right Angle.
  - 20 body sizes and 6 mounting styles.
- Selective gold plating.
- Accepts PC board thickness of .054" to .071" [1.37mm to 1.80mm].
- Polarization between contact positions in all sizes. Between contact polarization permits polarizing without loss of contact position.
- **Recognized under the Component Program of Underwriters Laboratories, Inc. Listed under File E65524, Project 77CH3889.**

### APPLICATIONS

For use with .0625" [1.59mm] printed circuit boards requiring an edgeboard type connector on .100" [2.54mm] centers.

### PHYSICAL SPECIFICATIONS

**Contact Type:** Bifurcated Cantilever Beam.

**Number of Contacts:** 10, 12, 15, 18, 20, 22, 25, 28, 30, 31, 35, 36, 40, 43, 44, 48, 49, 50, 60 and 65 per side.

**Contact Terminal Variation:** Standard terminals.

**Type "C"** - Dip Solder, .025" [.635mm] square terminals, .175" [4.44mm] nominal terminal length below standoffs.

**Type "D"** - Dip Solder, .025" [.635mm] square terminals, .115" [2.92mm] nominal terminal length below standoffs.

**Type "K"** - Wire Wrap™, .025" [.635mm] square terminals, .570" [14.48mm] nominal terminal length below standoffs.

**Contact Terminal Variation:** Right angle terminals.

**Type "1R"** - Dip Solder, .025" [.635mm] square terminals, .120" [3.05mm] nominal terminal length x .150" [3.81mm] nominal terminal row spacing.

**Type "2R"** - Dip Solder, .025" [.635mm] square terminals, .120" [3.05mm] nominal terminal length x .200" [5.08mm] nominal terminal row spacing.

**Type "3R"** - Dip Solder, .025" [.635mm] square terminals, .180" [4.57mm] nominal terminal length x .150" [3.81mm] nominal terminal row spacing.

**Type "4R"** - Dip Solder, .025" [.635mm] square terminals, .180" [4.57mm] nominal terminal length x .200" [5.08mm] nominal terminal row spacing.

**Contact Spacing:** .100" [2.54mm] center to center.

**Contact Terminal Row Spacing:**

Standard - .200" [5.08mm] nominal.

Right Angle - .200" [5.08mm] nominal and .150" [3.81mm] nominal.

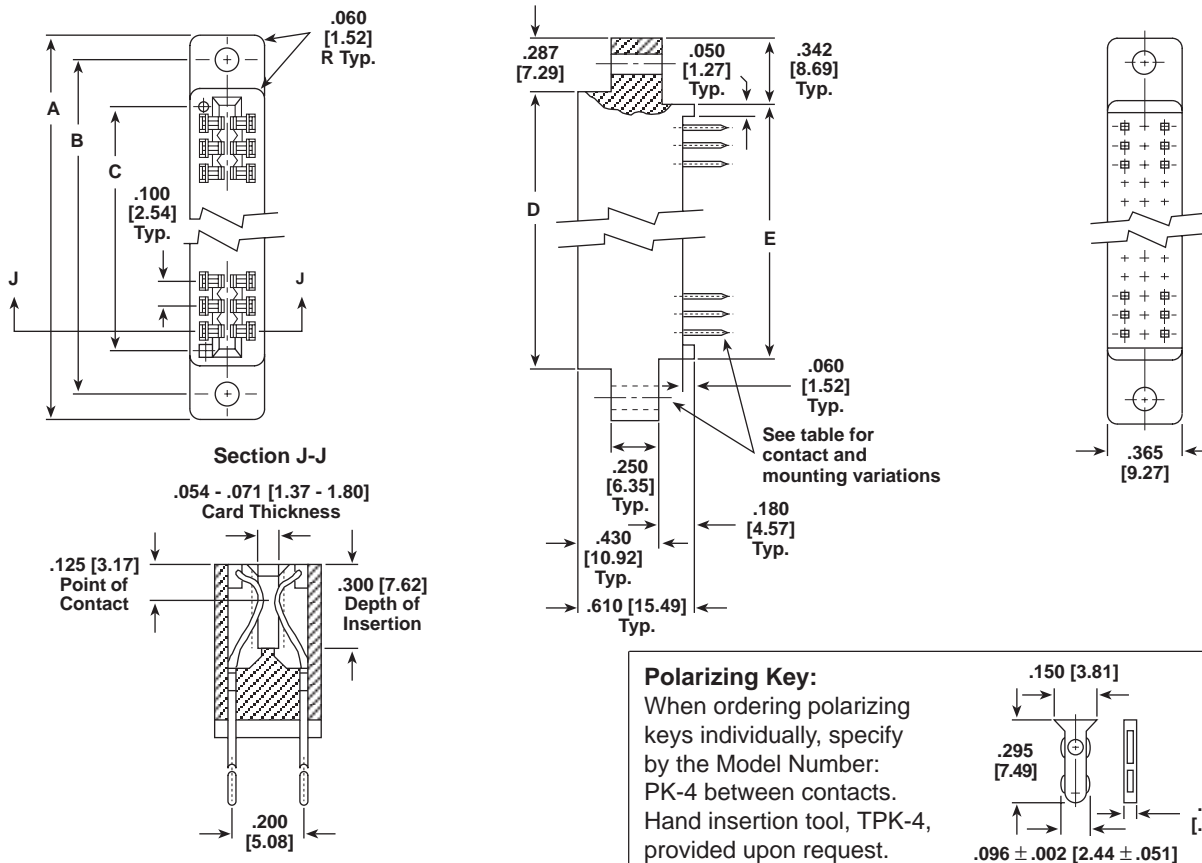
**Card Thickness:** .054" to .071" [1.37mm to 1.80mm].

**Card Slot Depth:** .300" [7.62mm].

**Connector Polarization:** Between contact polarization key(s) are located to the right of the contact position(s) designated.

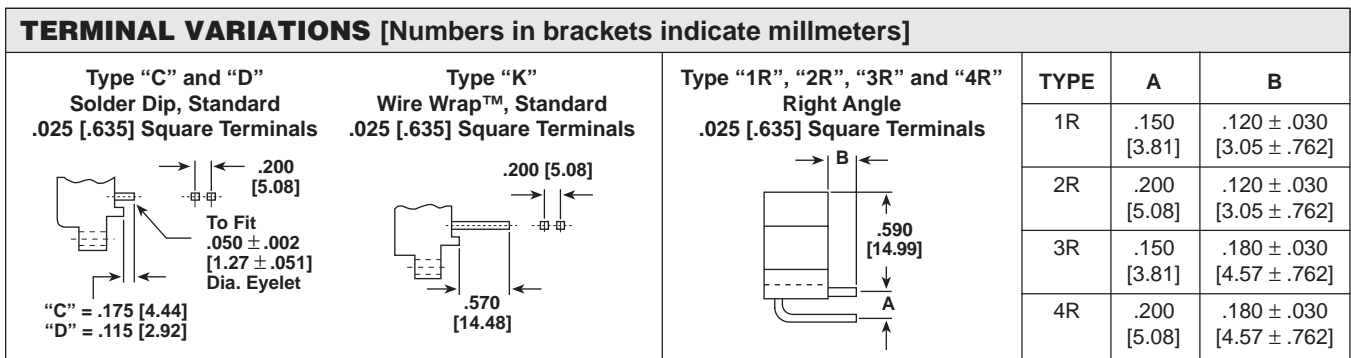
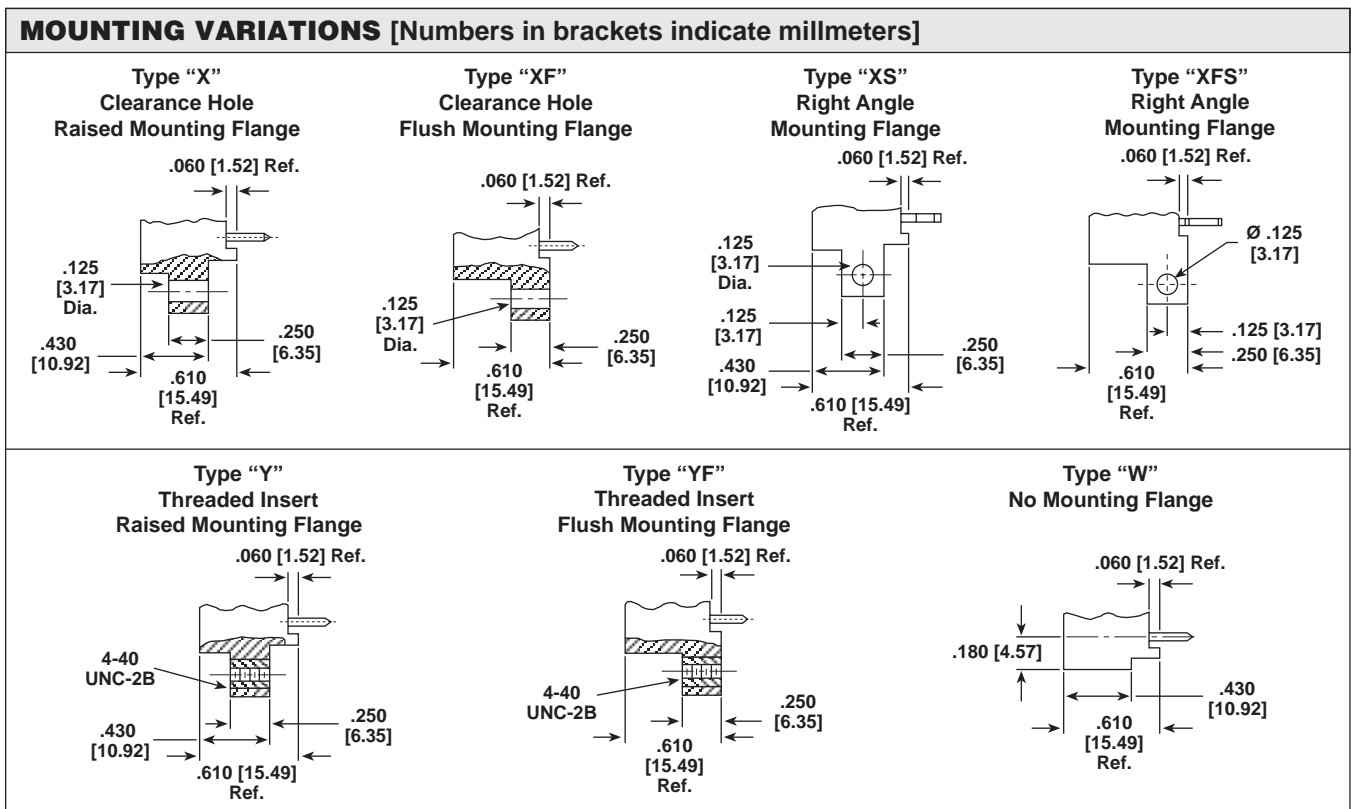
**NOTE:** High temperature burn-in, edgeboard connectors, with .100" [2.54mm] center to center are on page 19 of this catalog.

## DIMENSIONAL CONFIGURATIONS [Numbers in brackets indicate millimeters]



### # OF CONTACT POSITIONS PER SIDE

	A	B	C	D	E
10	1.835 [46.61]	1.575 [40.00]	1.100 [27.94]	1.260 [32.00]	1.150 [29.21]
12	2.035 [51.69]	1.775 [45.08]	1.300 [33.02]	1.460 [37.08]	1.350 [34.29]
15	2.335 [59.31]	2.075 [52.70]	1.600 [40.64]	1.760 [44.70]	1.650 [41.91]
18	2.635 [66.93]	2.375 [60.32]	1.900 [48.26]	2.060 [52.32]	1.950 [49.53]
20	2.835 [72.01]	2.575 [65.40]	2.100 [53.34]	2.260 [57.40]	2.150 [54.61]
22	3.035 [77.09]	2.775 [70.48]	2.300 [58.42]	2.460 [62.48]	2.350 [59.69]
25	3.335 [84.71]	3.075 [78.10]	2.600 [66.04]	2.760 [70.10]	2.650 [67.31]
28	3.635 [92.33]	3.375 [85.72]	2.900 [73.66]	3.060 [77.72]	2.950 [74.93]
30	3.835 [97.41]	3.575 [90.80]	3.100 [78.74]	3.260 [82.80]	3.150 [80.01]
31	3.935 [99.95]	3.675 [93.34]	3.200 [81.28]	3.360 [85.34]	3.250 [82.55]
35	4.335 [110.11]	4.075 [103.50]	3.600 [91.44]	3.760 [95.50]	3.650 [92.71]
36	4.435 [112.65]	4.175 [106.04]	3.700 [93.98]	3.860 [98.04]	3.750 [95.25]
40	4.835 [122.81]	4.575 [116.20]	4.100 [104.14]	4.260 [108.20]	4.150 [105.41]
43	5.135 [130.43]	4.875 [123.82]	4.400 [111.76]	4.560 [115.82]	4.450 [113.03]
44	5.235 [132.97]	4.975 [126.36]	4.500 [114.30]	4.660 [118.36]	4.550 [115.57]
48	5.635 [143.13]	5.375 [136.52]	4.900 [124.46]	5.060 [128.52]	4.950 [125.73]
49	5.735 [145.67]	5.475 [139.06]	5.000 [127.00]	5.160 [131.06]	5.050 [128.27]
50	5.835 [148.21]	5.575 [141.60]	5.100 [129.54]	5.260 [133.60]	5.150 [130.81]
60	6.835 [173.61]	6.575 [167.00]	6.100 [154.94]	6.260 [159.00]	6.150 [156.21]
65	7.335 [186.31]	7.075 [179.70]	6.600 [167.64]	6.760 [171.70]	6.650 [168.91]



### HOW TO ORDER

EB4 MODEL	3 BODY MATERIAL	K STANDARD TERMINAL VARIATIONS	20 CONTACTS	SG CONTACT PLATING	X MOUNTING VARIATIONS	15 POLARIZING KEY POSITIONS
	1 = Diallyl Phthalate 2 = Phenolic 3 = Glass-filled Polyester 5 = Glass-filled Polyphenylene Sulfid	C, D, K, 1R, 2R, 3R, 4R	10, 12, 15, 18, 20, 22, 25, 28, 30, 31, 35, 36, 40, 43, 44, 48, 49, 50, 60 and 65 per side.	SG = Selective Gold Plating (.00003" [.000762mm] minimum thick) on contact area with Gold Flash on terminal. SGF = Selective Gold Plating (.000010" [.000254mm] minimum thick) on contact area with Gold Flash on terminal. All Gold Plating over .00005" [.00127mm] minimum Nickel Underplate. Contact factory for additional plating options.		Key(s) are located to right of position(s) designated. Use odd-numbered contact for ordering: -1, -3, -5, etc. Required only when polarizing keys are to be factory installed. <b>NOTE:</b> To order polarizing keys individually, specify Model PK-4.