

# C&K DM Series Miniature Illuminated Power Rocker Switches



## Features/Benefits

- 3 AMPS to 10 AMPS
- Illuminated LED
- Positive detent
- RoHS compliant

## Typical Applications

- Instrumentation
- Industrial
- Office machines



## Specifications

CONTACT RATING: DM14 and DM24 Models: 3 AMPS @ 125 V AC; 2 AMPS @ 250 V AC. DM54 and DM64 Models: 10 AMPS @ 125 V AC; 5 AMPS @ 250 V AC (UL/CSA).  
ELECTRICAL LIFE: 10,000 make-and-break cycles at full load.  
INSULATION RESISTANCE:  $10^9 \Omega$  min.  
DIELECTRIC STRENGTH: 1,000 Vrms min. @ sea level.

**NOTE:** Any models supplied with Q contact material are RoHS compliant. For the latest information regarding RoHS compliance, please go to: [www.ittcannon.com/rohs](http://www.ittcannon.com/rohs).

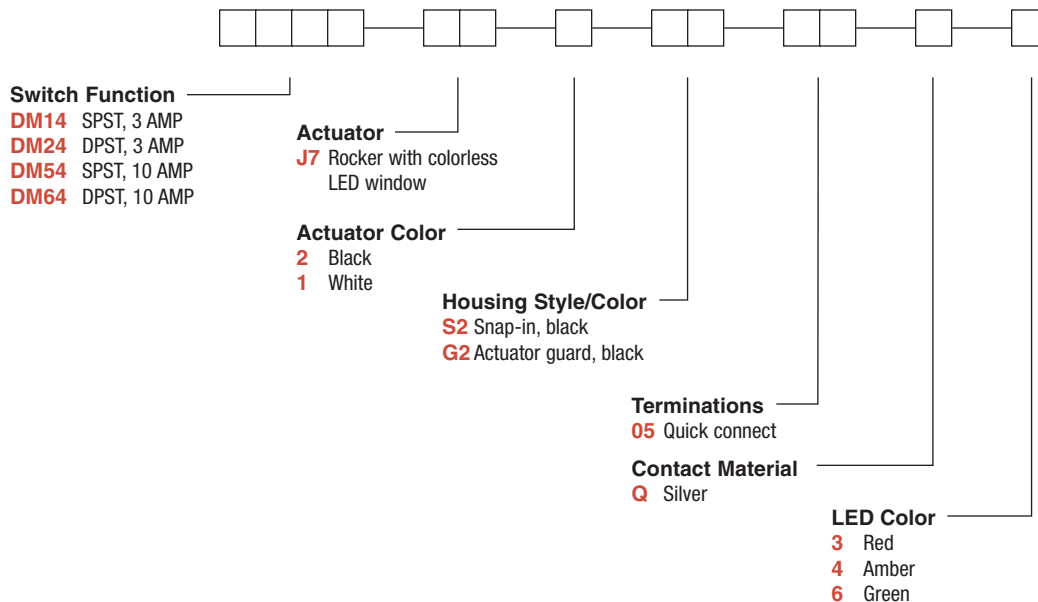
**NOTE:** Specification and materials listed above are for standard switches. For information on specific and custom switches, consult Customer Service Center.

## Materials

HOUSING: 6/6 nylon (UL94V-2), black.  
ACTUATOR: 6/6 nylon (UL94V-2), black.  
MOVABLE CONTACTS: DM14 and DM24 Models: Copper, silver plated. DM54 and DM64 Models: Coin silver, silver plated.  
STATIONARY CONTACTS & TERMINALS: Copper or brass, silver plated.  
LED TERMINALS: Brass, unplated.  
CONTACT SPRING: Music wire or stainless steel.  
OPERATING TEMPERATURE: -20°C to +85°C

## Build-A-Switch

To order, simply select desired option from each category and place in the appropriate box. Available options are shown and described on pages H-75 and H-78. For additional options not shown in catalog, consult Customer Service Center.



Rocker



H



ITT

Dimensions are shown: Inch (mm)  
Specifications and dimensions subject to change

# C&K DM Series Miniature Illuminated Power Rocker Switches

## SWITCH FUNCTION



NO. POLES	MODEL NO.	AMP RATING*	SWITCH FUNCTION		CONNECTED TERMINALS		SCHEMATIC
			POS. 1	POS. 2	POS. 1	POS. 2	
SP	<b>DM14</b> <b>DM54</b>	3 10	ON	OFF	1-1A	OPEN	SPST
DP	<b>DM24</b> <b>DM64</b>	3 10	ON	OFF	1-1A, 2-2A	OPEN	DPST

**DPDT**

Actuator shown in pos. 1 - 'ON' position.

Part number shown: DM24J72S205Q3

TERM. NOS. FOR REFERENCE ONLY

SPST models (DM14 & DM54), omit terminals 2 and 2A.

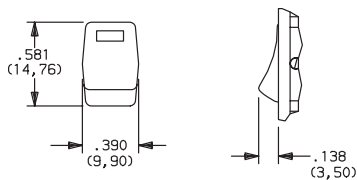
\* RATINGS: DM14 and DM24 models: 3 AMPS @ 125 V AC; 2 AMPS @ 250 V AC. DM54 and DM64 models: 10 AMPS @ 125 V AC; 5 AMPS @ 250 V AC.

All models with all options.

## ACTUATOR



### J7 ROCKER WITH COLORLESS LED WINDOW



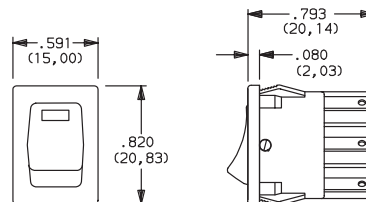
OPTION CODE	ACTUATOR COLOR
<b>2</b>	BLACK
<b>1</b>	WHITE

**NOTE:** Other colors available, consult Customer Service Center.

## HOUSING STYLE/COLOR



### S2 SNAP-IN, BLACK



**NOTE:** Housing finish: matte. Other colors available, consult Customer Service Center.



Third Angle Projection  
Dimensions are shown: Inch (mm)  
Specifications and dimensions subject to change

Rocker



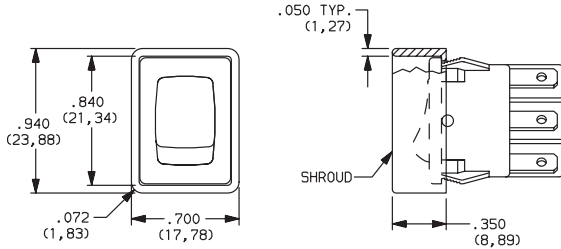
H

# C&K DM Series Miniature Illuminated Power Rocker Switches

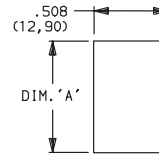
## HOUSING STYLE/COLOR

**G2** ACTUATOR GUARD, BLACK

**NEW!**



### PANEL MOUNTING



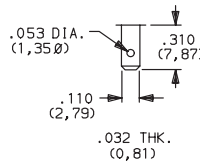
'S2' & 'G2' housing style

NOTE: Blank insert available for SP models only, see page H-80.

PANEL THICKNESS	DIM 'A' 'S2' & 'G2' HOUSING STYLES	DIM 'A' with 'G2' option SP MODELS ONLY
.030-.049 (0,76) (1,24)	0.756 (19,20)	0.764 (19,41)
.049-.079 (1,24) (2,01)	0.764 (19,41)	0.780 (19,81)
.079-.118 (2,01) (3,00)	.780 (19,81)	n/a

## TERMINATIONS

**05** QUICK CONNECT



## CONTACT MATERIAL

OPTION CODE	RoHS COMPLIANT *	RoHS COMPATIBLE *	CONTACT AND TERMINAL MATERIAL	RATINGS	
				POWER	
<b>Q</b>	YES	YES	SILVER 1,2		DM14 and DM24 Models: 3 AMPS @ 125 V AC; 2 AMPS @ 250 V AC. DM54 and DM64 Models: 10 AMPS @ 125 V AC; 5 AMPS @ 250 V AC.

\* Note: See Technical Data section of this catalog for RoHS compliant and compatible definitions and specifications.

<sup>1</sup> MOVABLE CONTACTS: DM14 and DM24 models: Copper, silver plated.  
DM54 and DM64 models: Coin silver, silver plated.

<sup>2</sup> STATIONARY CONTACTS & TERMINALS: Copper or brass, silver plated.

**NOTE:** Any models supplied with Q contact material are RoHS compliant.  
For the latest information regarding RoHS compliance, please go to: [www.ittcannon.com/rohs](http://www.ittcannon.com/rohs).

All models with all options.

## LED COLOR

OPTION CODE	LED COLOR	FORWARD V <sub>FD</sub>	CURRENT I <sub>LED</sub>	REVERSE V <sub>R</sub>	INTENSITY M <sub>CD</sub>	RECOMMENDED RESISTOR @ VOLTAGE		
						5V	12V	24V
<b>3</b>	Red	2.1	10	4V	1.6 typ.	270	1K	2.2K
<b>4</b>	Amber	2.2	20	4V	2.5 typ.	150	510	1.2K
<b>6</b>	Green	2.1	20	4V	2.0 typ.	150	510	1.2K



Third Angle Projection

Dimensions are shown: Inch (mm)  
Specifications and dimensions subject to change

Rocker



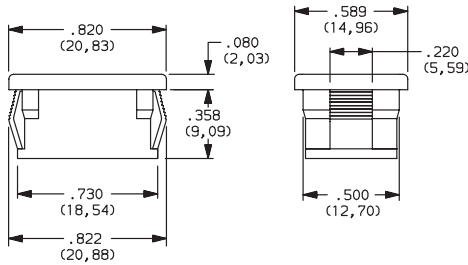
H



# C&K DM Series Miniature Illuminated Power Rocker Switches

## AVAILABLE HARDWARE

Blank Insert



**PART NO.**  
**057190200**

Material: Zinc nylon 6/6  
Finish: Matte

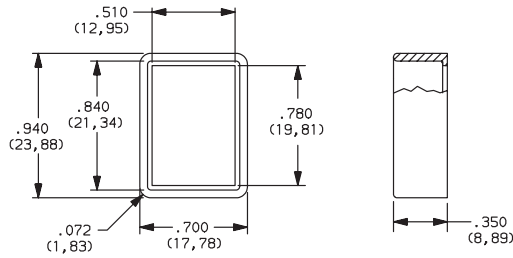
Recessed Bracket



**PART NO.**  
**057090100**

Material: 6/6 Nylon  
Finish: Matte

Actuator Gaurd



**PART NO.**  
**104C02000**

Material: PBT thermoplastic  
Finish: Matte